



**ALLIANCE
TRUCK PARTS**

WIPER REFILLS



WIPER REFILLS

Suits all popular 6mm & 8mm conventional wiper blades.

Features & Benefits:

- Suits all popular 6mm & 8mm conventional wiper blades
- Natural compound rubber
- UV Stabilised for longer life
- Moulded rubber process
- OEM stainless steel rails
- Snap to length

ALLIANCE PART #	DESCRIPTION
QABP ATR61020	6mm wide Metal Twin Rail Refill (20 pack)
QABP ATR71010	8mm wide Metal Twin Rail Refill (10 pack)

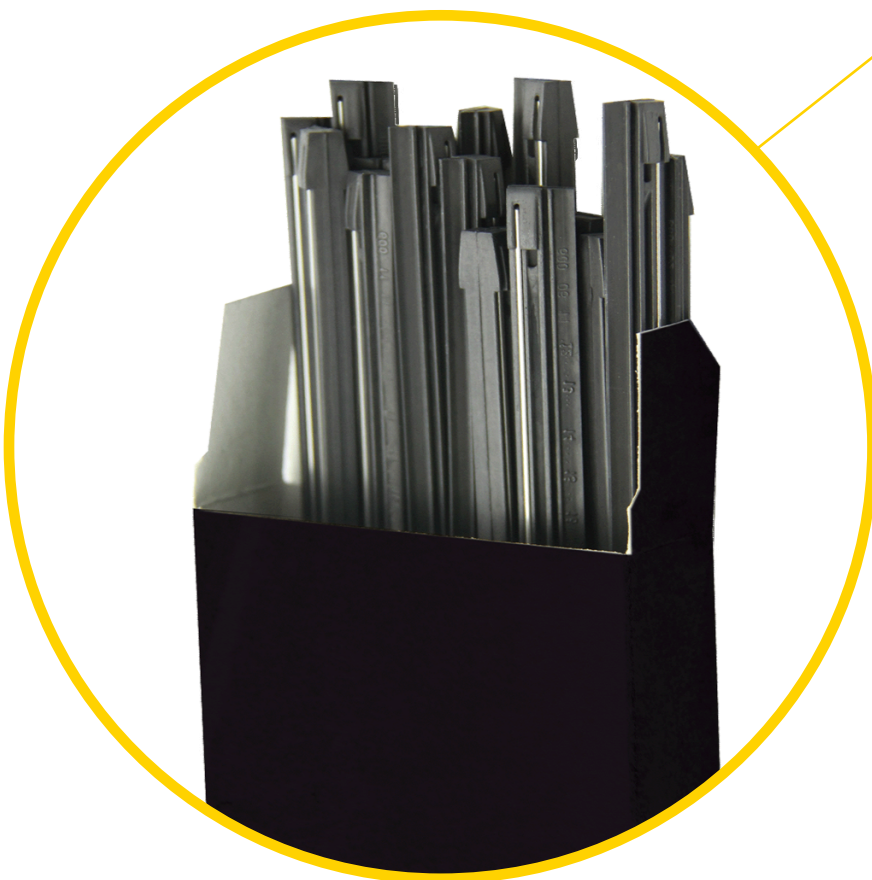


Illustration and photographs used in this catalogue may vary slightly from the actual product. Prototype samples are sometimes for photography. The production parts may vary slightly. Availability of products shown in this catalogue is subject to change without notice. Alliance Truck Parts is a registered trademark of Daimler Trucks North America LLC.

VISIBILITY MAINTENANCE TIPS

Check your wipers to ensure the best driving vision

- Inspect your wipers once a month.
- Have a professional look at them whenever you bring your vehicle in for maintenance or a repair.
- Change your wiper blades every six months.

Tips on keeping your windshield clean

- Clean rubber element every time you fill your gas tank. Remove loose dirt and road grime from the windshield.
- When hand washing your car, use a small amount of non-abrasive glass cleaner on a wet sponge to clean both the windshield and the rubber wiping elements.

Signs that you need new windshield wipers

Deteriorated wipers produce an uneven wipe, which prevents proper contact with the windshield surface. This will create unwiped or streaky areas, severely impairing your driving vision.

If any of the conditions below describe your wipers, replace them today:

Streaking

Caused by dry rubber that has hardened and cracked. Streaking can also be caused by tree sap, road tar and other foreign substances on the blade rubber.

Chattering

Caused by the “permanent set” or “curve” in the rubber that some wiper blades develop while they are not being used. This condition is characterised by the chattering sound the blade makes as it passes across the windshield.

Worn Rubber

General rounding of the wiping edge caused by age.

Split Rubber

A condition found on blades that are old, or may be due to the effects of the sun’s ultraviolet rays on the rubber.

Bent Refill or Wiper Frame

Sometimes caused by automatic car washes or vandalism.



— FIND YOUR NEAREST LOCATION AT ALLIANCETRUCKPARTS.COM.AU —



Mercedes-Benz is a registered trademark of Daimler AG, Stuttgart Germany. Fuso is a registered trademark of Mitsubishi Fuso Truck and Bus Corporation, Japan. Freightliner and Alliance Truck Parts are registered trademarks of Daimler Trucks North America LCC, a Daimler company, distributed by Daimler Truck and Bus Australia Pacific Pty Ltd. ABN 86 618 413 282. Specifications are subject to change without notice. Copyright © Daimler Truck and Bus Australia Pacific Pty Ltd. All rights reserved.